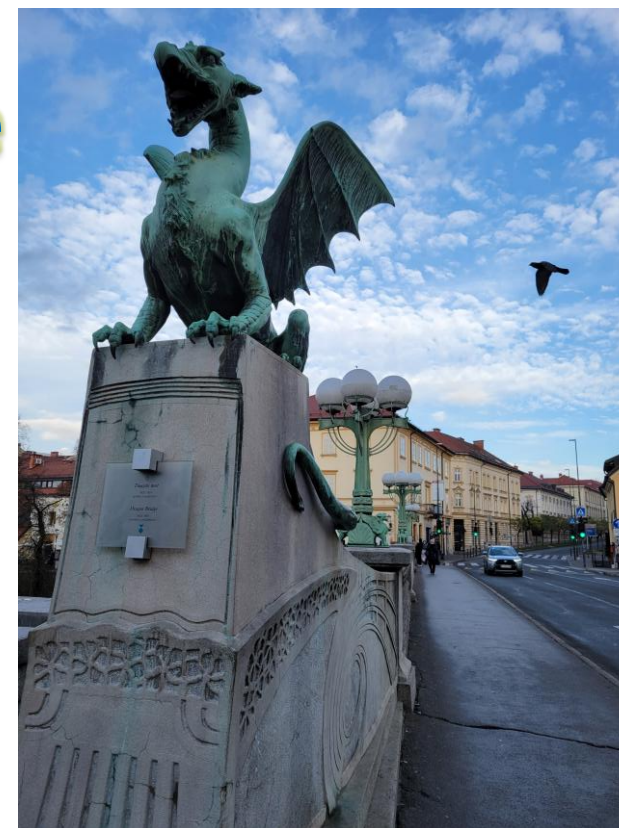


Themes that may arise in Shared Presencing Spaces:

- Psychological and Polyvagal
- Physics and Brainwave Coherence
 - Resonance and Biological
 - Alchemical
 - Shamanic



Bruce Nayowith M.D.
bnayowith@yahoo.com

Psychological and Polyvagal Themes 1

1-Exploring Safety and Protective Structures



2-Exploring Consent to Intimacy



3-Preseing issues and blocks

Psychological and Polyvagal Themes 2

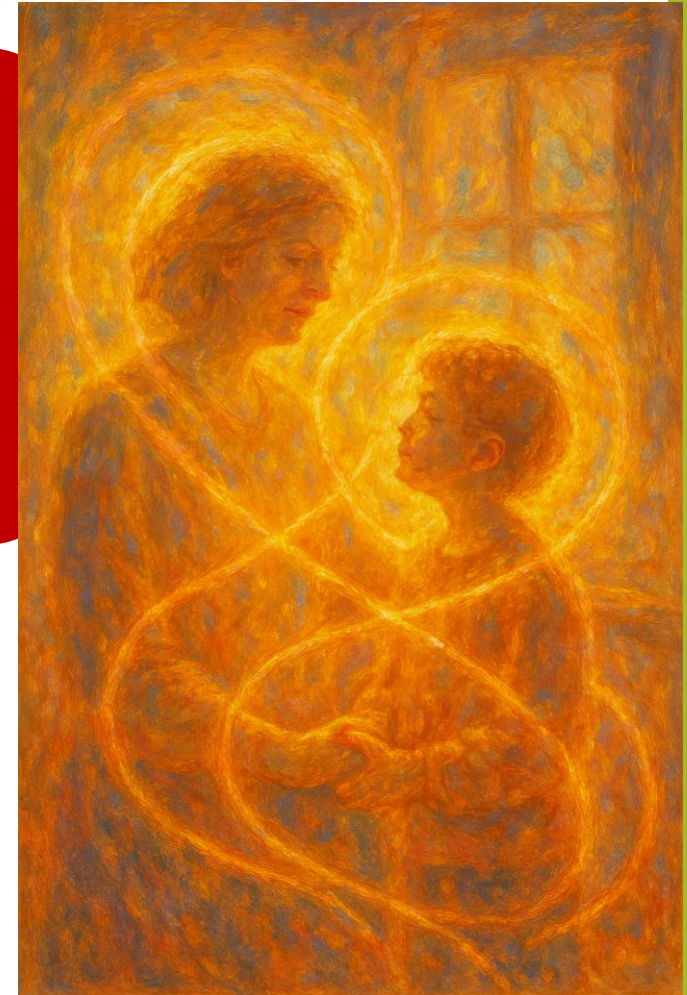
A DEEP
DIVE INTO
SECURE
ATTACH-
MENT

ThriveFamilyServices.com



4-Exploring
Attachment and
energetic bonding

5- Co-regulation of
emotions
"Sharing Nervous
Systems"

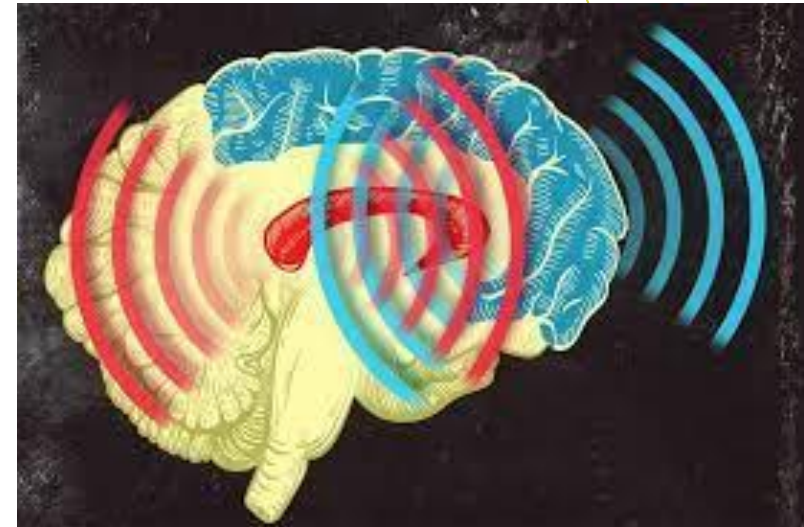
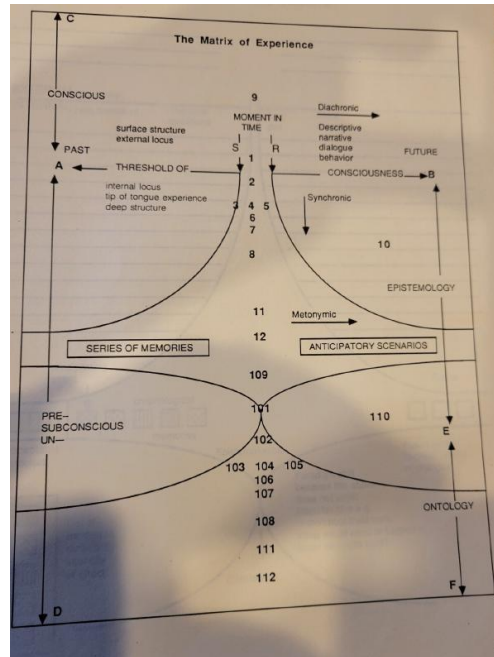


Resonance and Attunement 1

6-Pausing and Opening into Deeper layers of the psyche

The emotional and somatic frequencies are slower than the mental frequencies

(Image from David Groves "Resolving Traumatic Memories" training – about pausing and opening a moment in time, dropping into the deeper structures between stimulus and response)



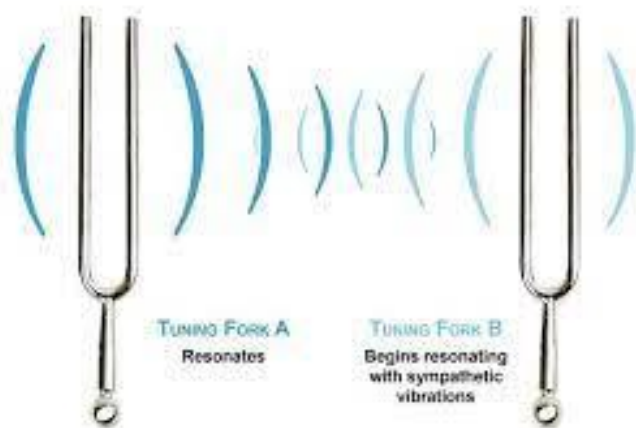
7-Offering prompts to direct attention into various realms and domains

Resonance and Attunement 2

8-Exploring Forms of Resonant Attunement and Alignment

Shifting frequencies to attune more fully

Creating interpersonal harmonics

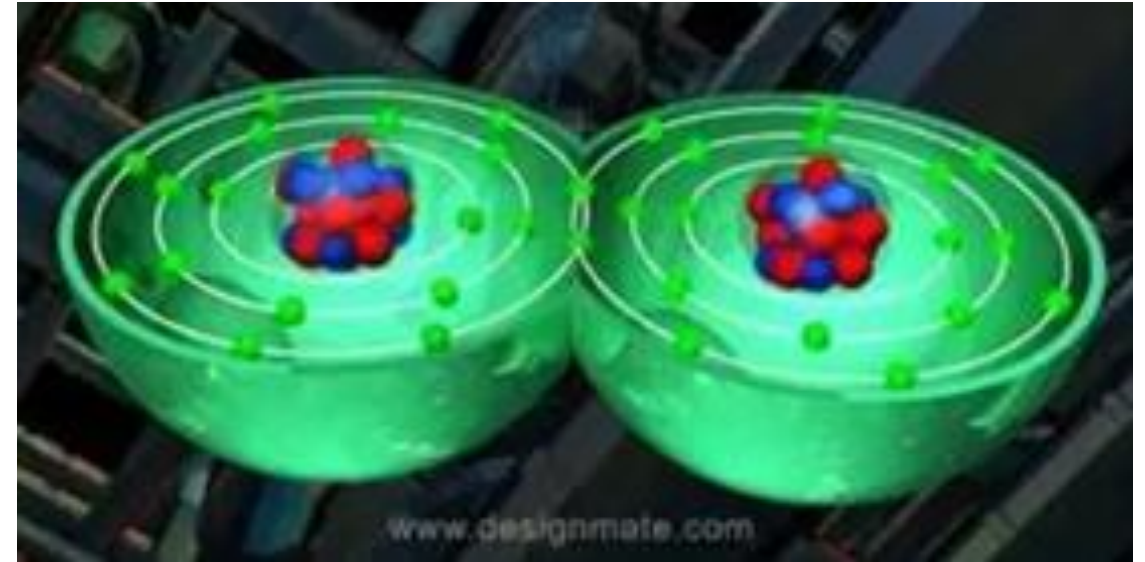


9-Fine Tuning through Micropractices

- How am I leaning?
- Am I being with you or being with it?

Sharing Nervous Systems

“borrowed functioning”

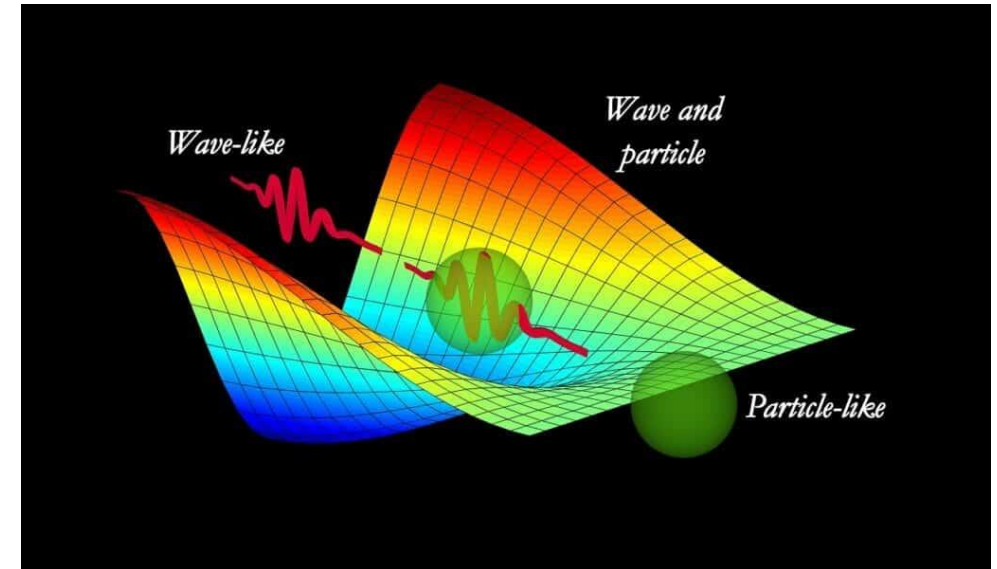


Still some sense of distinct identities
(**egg yolk**, **nucleus of atoms**)

AND a shared field of experiencing
(egg white, **electrons**)

Quantum Physics Themes

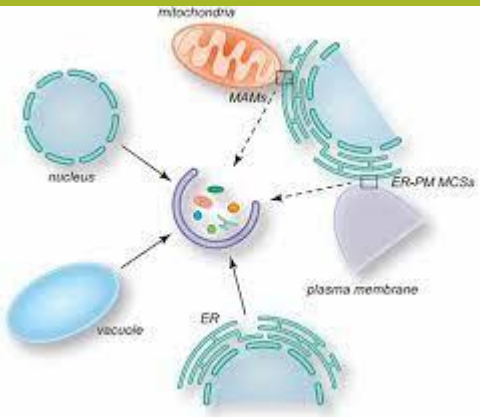
10-Experiencing both 'particle' and 'wave-like' natures



11- Experiencing Quantum Entanglement in our own system and with others



Meta-Biology Themes 1



12-Encounters Across Subtle Body "Membranes"

- Membrane Contact.
- Accessing and unlocking 'receptor sites' in the subtle body

13-Biomimicry



14-Mycelial or Antenna-like interactions

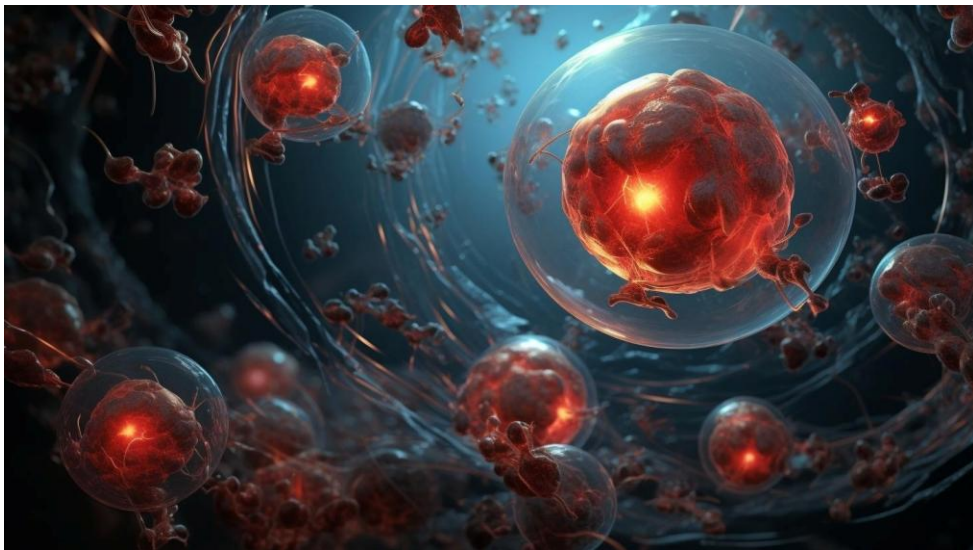


15-Co-presencing with other life forms



Meta-Biology Themes 2

16- Accessing "Energetic Stem Cell" potentials. Allowing Evolution to create something new.

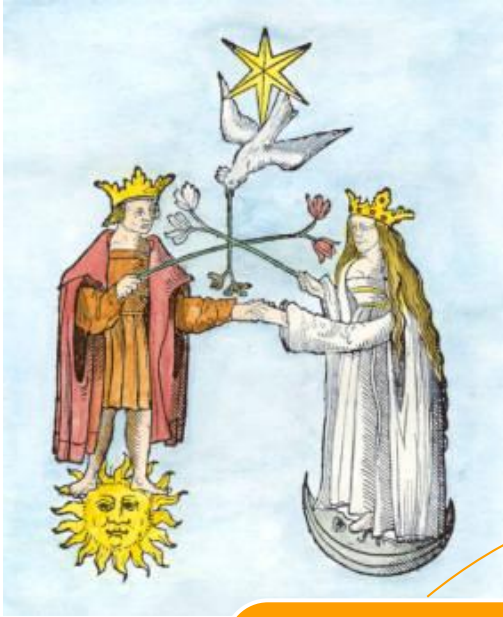


17- Maieutic holding of another's subtle body
"Womb-ing"



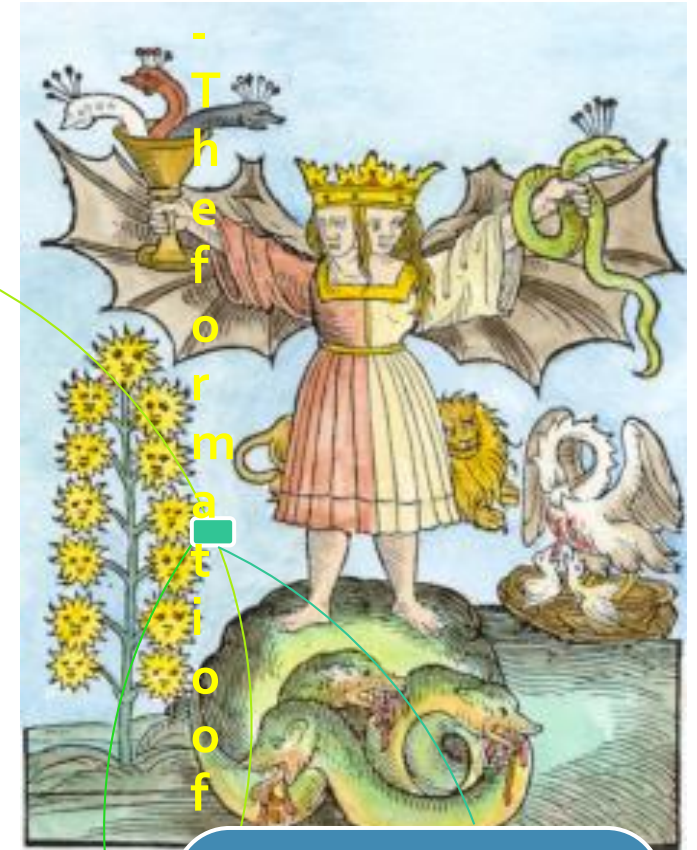
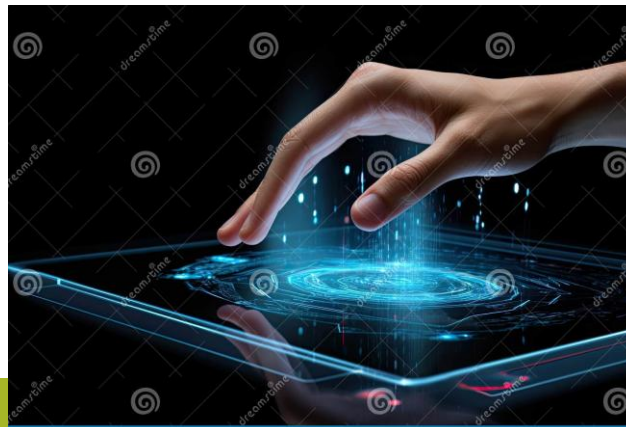
Alchemical Interactions 1

Images from <https://www.alchemywebsite.com/index.htm>



18-Holding polarities- the tension of opposites

19-Mutual Activation of "Launch codes" in each other



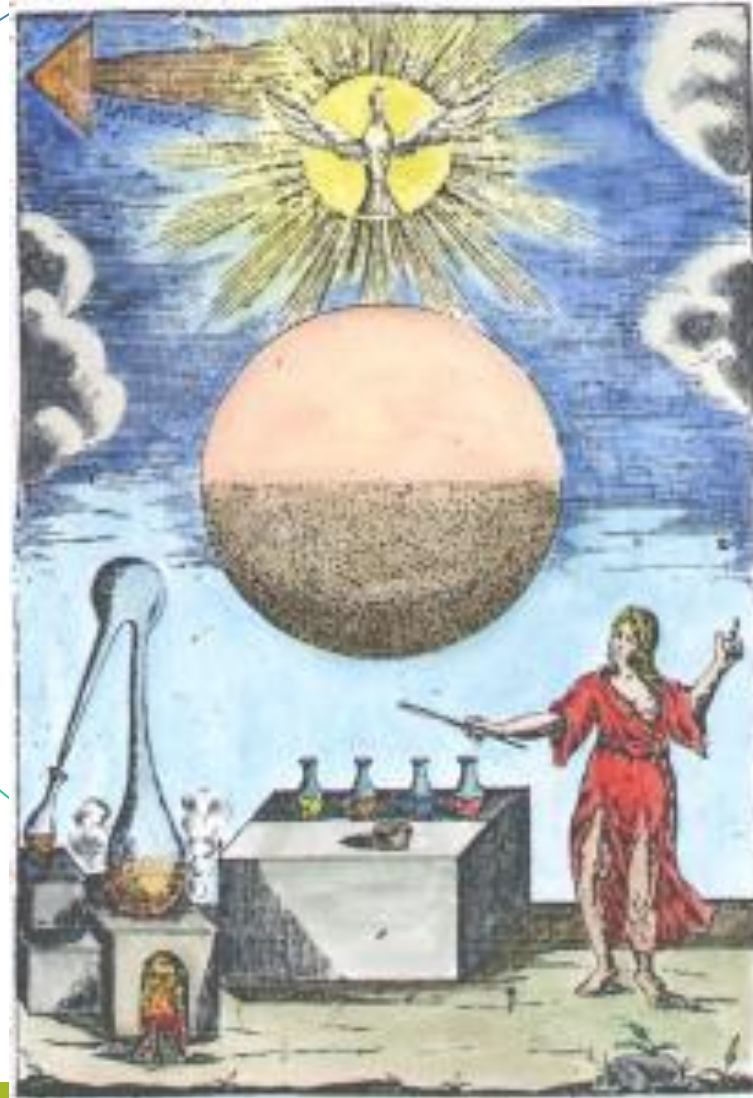
20-Formation of new energetic 'structures'

The formation of

Alchemical Interactions 2

Images from <https://www.alchemywebsite.com/index.html>

17 - Formation of new energetic structures



21-The experience of a Third Presence

22-Generating Luminous Energetic Potentials – “The Lapis”

Shamanic themes 1

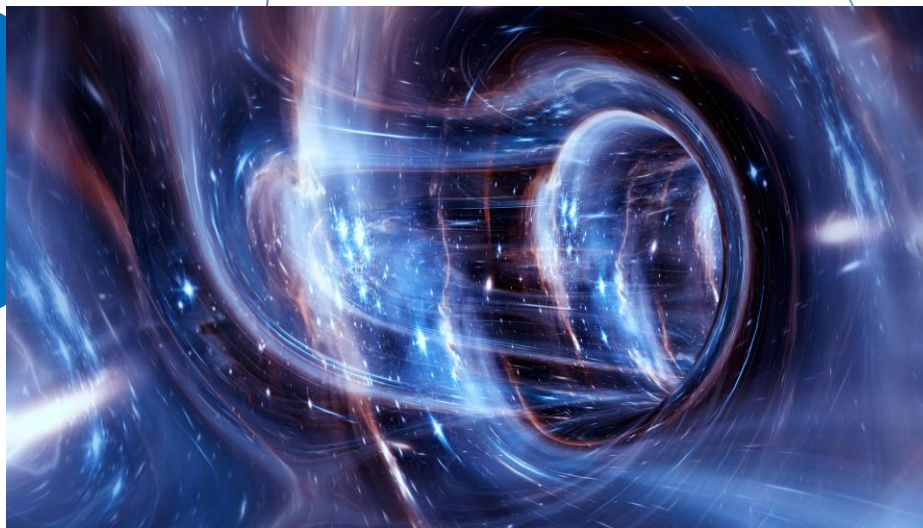


23-Energetic Shapeshifting

24- Co-journeying



25-Body centers as portals to different realms
-sky, earth, humans



Shamanic Themes 2

26-Finding "Lost Ones"
"Lock Picking"



27-Soul Retrieval



28-Shamanic Extraction

